

## IMPORTANT

This document concerns units labelled **FAAST LT** only.  
Units labelled **FAAST LT-200** **DO NOT REQUIRE THIS PROCEDURE**

The following procedure should be used to upgrade the firmware in a FAAST LT device (both stand-alone and loop-based units) when replacing the following sensors with the equivalent new F-SEN device.

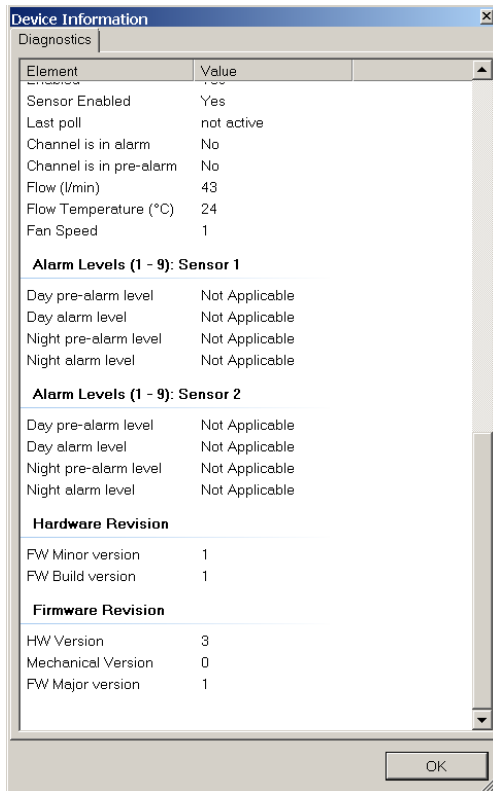
7251	➔	F-SEN-SSE
FSL-751E (VIEW™)	➔	F-SEN-NFX
MI-LZR	➔	F-SEN-MI

To identify the current version of firmware in the unit, run PipelQ™ and read the **Device Information**.

Always use the latest version of PipelQ™ which can be found on the System Sensor Europe website:

[www.systemsensoreurope.com](http://www.systemsensoreurope.com)

Using older versions with this upgrade tool is not recommended.



**NOTE:** To run the upgrade tool, PipelQ must be installed on the PC. But the PipelQ application should not be in the 'connected' software state with the FAAST LT device, because it will then be occupying the PC COM port required by the upgrade tool.

## IMPORTANT

When the firmware upgrade procedure is completed, The firmware Minor Version 4Dv1 should be noted indelibly on the label provided and mounted beside the nameplate label on the inside of the unit's door.

## FIRMWARE UPGRADE PROCEDURE

### (USING FAAST LT UPGRADE TOOL 4D-V1.0)

The software required to upgrade a FAAST LT device can be downloaded from the System Sensor Europe website:

[www.systemsensoreurope.com](http://www.systemsensoreurope.com)

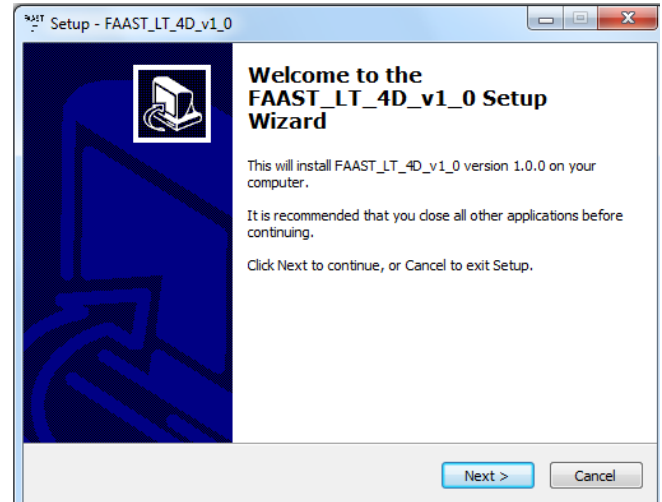
Navigate to: **Products/Aspiration/FAAST LT Devices**

The upgrade software will be found listed as:

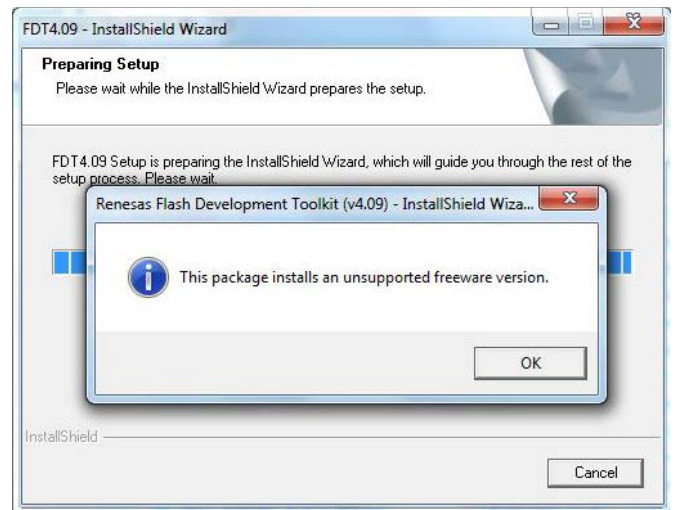
### FAAST LT Firmware Upgrade

Click on the link and follow the instructions to download the upgrade software to your computer. It is recommended to **SAVE** the file into the **Downloads** folder.

Go to the **Downloads** folder, find the **setup\_FAAST\_LT\_4D\_v1\_0.exe** file and **Run** it.

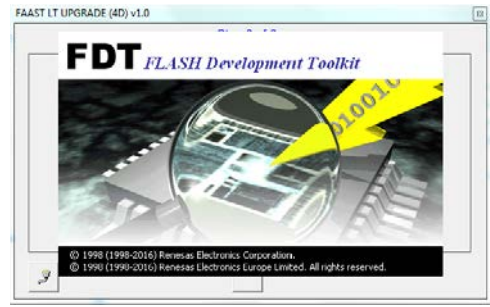
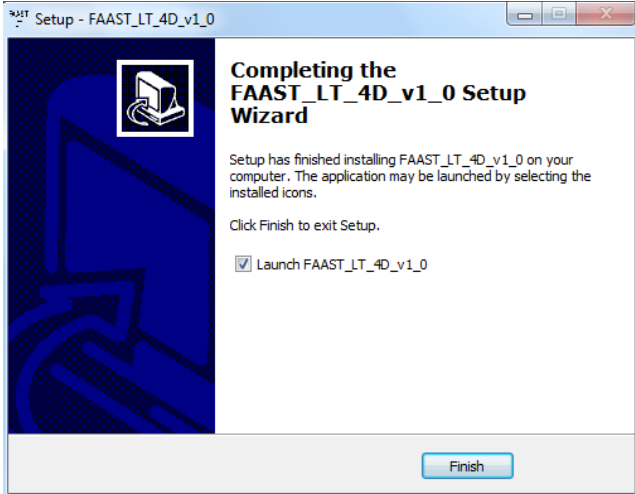


The setup wizard will first install a proprietary Renesas Flash Development Tool, required to re-write the microcontroller memory, and then it will run the upgrade routine itself.

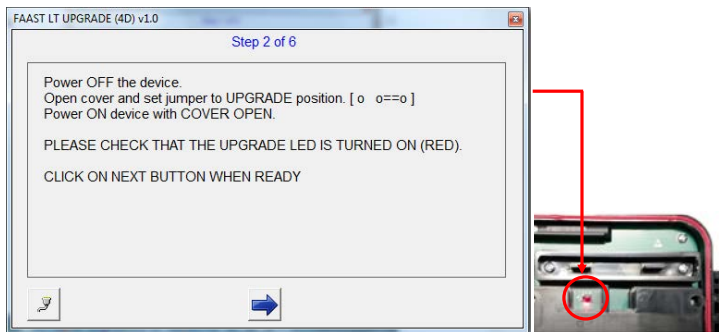
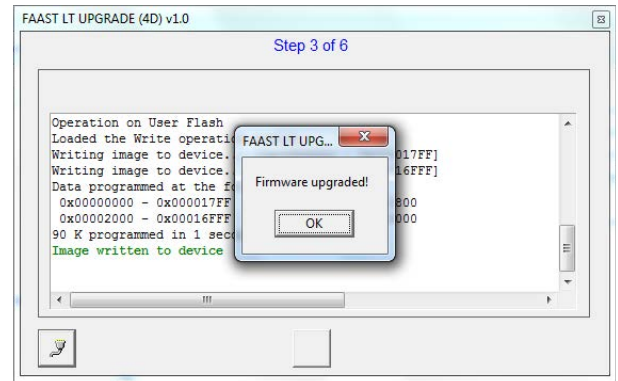
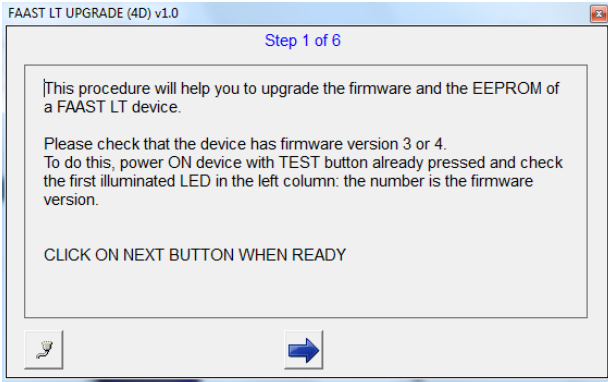
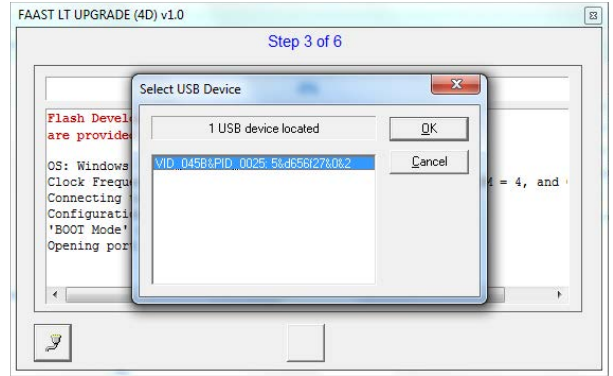


Select the language, accept the Renesas licence, and click through the subsequent screens, maintaining all the default settings.

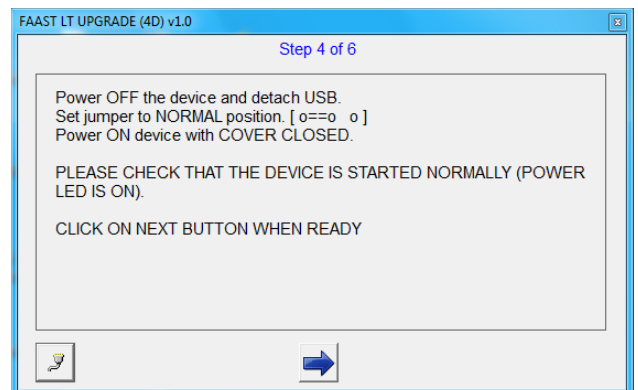
**Install** the Renesas tool and then click on **Finish** to complete the FAAST LT Upgrade Wizard setup.



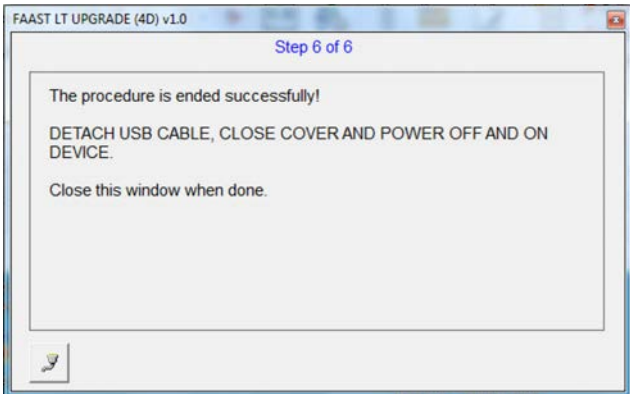
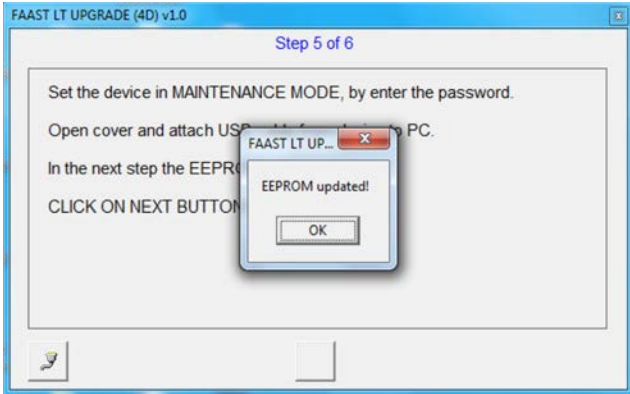
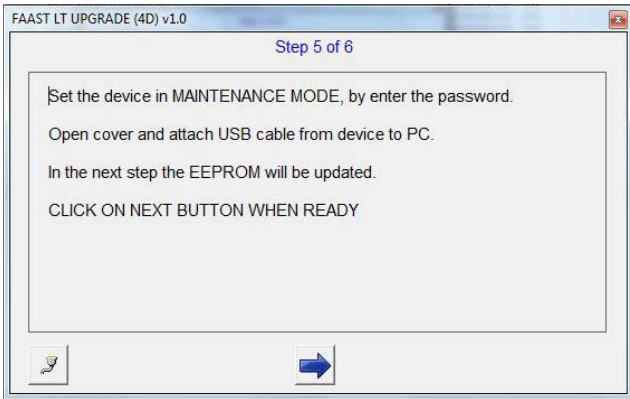
With the upgrade tool installed, the system is now ready to perform the FAAST LT firmware upgrade. The upgrade process is explained step-by-step in the following program windows. Ensure that the FAAST LT unit is powered off and on, and the USB cable is connected when requested to do so in the sequence.



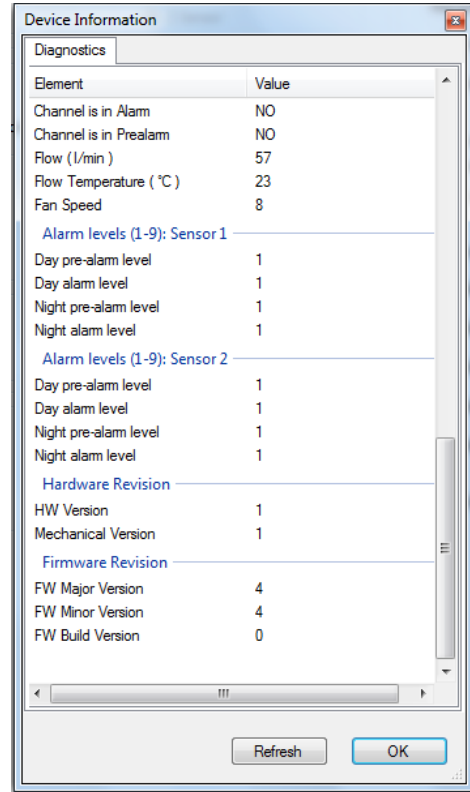
At this point the first stage of the FAAST LT device upgrade is complete. Move on with Steps 4 to 6 to update the EEPROM and complete the process.



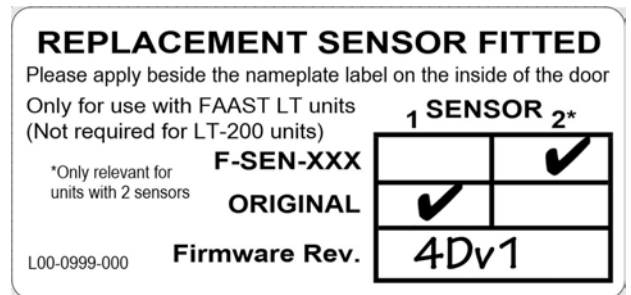
**Note:** At this step, wait 5 second when the **USB DEVICES** dialog box appears, before clicking on the **OK** button.



The newly upgraded version of firmware in the unit can be checked by running PipeIQ and reading the *Device Information*.



It is recommended that the firmware revision to Minor Version **4Dv1** is noted indelibly on the label provided and mounted beside the nameplate label on the inside of the unit's door.



The procedure finishes with a message that the complete upgrade procedure has been successful.

**Be sure to power the unit OFF and ON again to finalise the process.**

**System Sensor Europe  
 Pittway Tecnologica S.r.l.  
 Via Caboto 19/3  
 34147 TRIESTE  
 Italy**